


# **Spectrophotometer Configuration Tool CM-CT1**

**Ver. 1.5**

## **En Instruction Manual**

 Please read before using the instrument.



KONICA MINOLTA



## Safety Precautions

Before using the software, please read this manual as well as the instruction manuals of your instrument and computer carefully to ensure safe and correct use.

### Official names for applications and the like used in this manual

(Wording used in text) (Official name)

Windows 10	Microsoft® Windows® 10 Pro Operating System
Windows 11	Microsoft® Windows® 11 Pro Operating System
Bluetooth	Bluetooth®

### Trademarks

- Microsoft, Windows, Windows 10, Windows 11, and Excel are registered trademarks of Microsoft Corporation in the United States and/or other countries.
- The Bluetooth mark and logo are registered trademarks of The Bluetooth SIG, Inc. and are used under license.
- Other company and product names included in this manual are trademarks or registered trademarks of their respective companies.

### Notes on this Manual

- Copying or reproduction of all or part of the contents of this manual without the permission of KONICA MINOLTA is strictly prohibited.
- The contents of this manual are subject to change without prior notice.
- Every effort has been made in the preparation of this manual to ensure the accuracy of its contents. However, should you have any questions, or find an error or missing section, please contact your local sales office.
- KONICA MINOLTA will not accept any responsibility for the consequences arising from the use of the software without following the instructions in this manual.
- The screenshots included in this manual show CM-CT1 connected to a CM-17d series device. The display differs when CM-CT1 is connected to other instruments.

# Introduction

This software (hereafter referred to as “CM-CT1”), is used by connecting a spectrophotometer to a computer. The CM-CT1 can be used for the following purposes.

1. Instrument Settings (\*Available settings depend on the connected instrument)
2. Export Data Capabilities
3. Calibration Data Settings
4. Remote Control

## Software License Agreement

The terms of the license agreement of CM-CT1 are provided in the [Software License Agreement] dialog box displayed on-screen during the installation process. CM-CT1 can be installed only if you agree to all the terms of the agreement.

## Notes on Use

- CM-CT1 software is an application for use with Windows 10 or Windows 11. Note that no operating system is included with CM-CT1. One of the above OS must be installed on the computer in order to install CM-CT1.

## System Environment

### ■ Operating requirements

OS:	Windows 10 64 bit Windows 11
CPU:	2.0 GHz or more
RAM:	2 GB or more
Hard disk:	At least 10 GB of free space on the system drive
Display:	Resolution of 1024 × 720 or higher, 16-bit color or higher
Other:	USB port (required to connect the instrument)

### ■ Controllable Instruments



CM-26dG, CM-26d, CM-25d, CM-25cG, CM-17d, CM-16d, CM-700d, CM-700d-U, CM-600d, CM-5, CR-5, CM-M6

### ■ Display Languages

Japanese, English

# Table of Contents

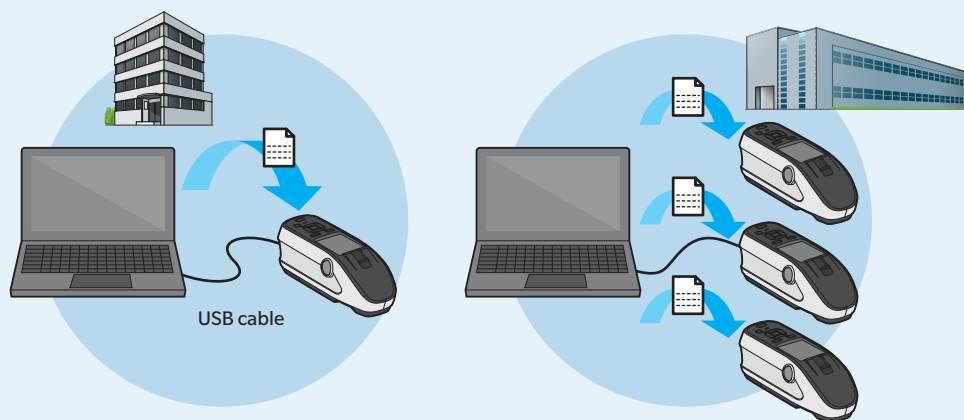
---

Introduction.....	2
Software License Agreement.....	2
Notes on Use.....	2
System Environment.....	2
Table of Contents .....	3
CM-CT1 Capabilities.....	4
Instrument Settings .....	4
Calibration Data Settings .....	4
Export Data.....	4
Remote Control.....	4
Quick Start.....	5
Starting and Exiting CM-CT1 .....	5
Starting the Software and Establishing Communication .....	5
When using a CM-17d series, CM-26dG series, CM-25cG, or CM-M6 instrument connected via cable.....	5
When using a CM-700d series instrument, CM-5, or CR-5 connected via cable.....	5
When connecting via Bluetooth.....	5
Disconnecting and Exiting the Software .....	6
Changing the Display Language.....	7
Configuring Instrument Settings.....	8
Procedure.....	8
User Index and User Class .....	9
Restricting Worker Operations (   Display) .....	10
Remote Control.....	11
Wireless Settings .....	12
Adhoc .....	13
Infrastructure1 to Infrastructure4 .....	14
Bluetooth.....	15
Advanced Use .....	16
Setting the Same Measurement Conditions to Multiple Instruments.....	16
Remote Control Capabilities.....	17
Export Data Capabilities.....	18
After Purchasing a New White Calibration Plate or Gloss Calibration Plate.....	19
Errors and Corrective Actions .....	20

# CM-CT1 Capabilities

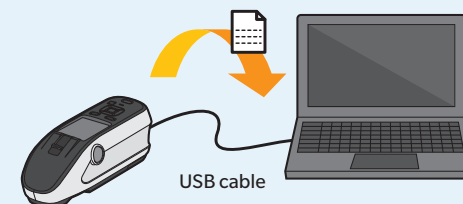
## Instrument Settings

CM-CT1 allows various instrument settings, such as measurement conditions, instrument display contents, user-based instrument operation restrictions, WLAN/Bluetooth settings, etc. to be set using a computer. The software also allows setting contents to be exported to a file which can then be applied to multiple spectrophotometers.



## Export Data

Data saved to a spectrophotometer (spectral reflectance data, plus gloss data for CM-26dG or CM-25cG) can be saved to a CSV file.



## Remote Control

While displaying the LCD screen of the spectrophotometer\* on a computer in real time, CM-CT1 enables control equivalent to key operations on the actual instrument (except for power switch and measurement area switch)

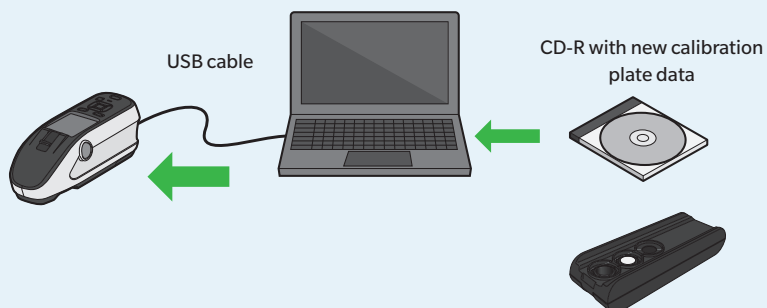
In addition, by accessing (via remote desktop, etc. over a network) a computer connected to the spectrophotometer, control of the spectrophotometer is possible even from remote locations.

\* CM-26dG series, CM-25cG, CM-17d series, or CM-M6 devices only.



## Calibration Data Settings

Whenever purchasing a new white calibration plate or gloss calibration plate, the calibration plate data must be saved in the instrument before measurement can be performed.



# Quick Start

## Starting and Exiting CM-CT1

### ◆ Starting the Software and Establishing Communication

- 1 Double-click the shortcut icon  on the desktop, or access the program menu and select "KONICA MINOLTA" - "Configuration Tool CM-CT1".  
If SpectraMagic NX2 has been installed, CM-CT1 can be started by clicking on Config Tool in the SpectraMagic NX2 Launcher.

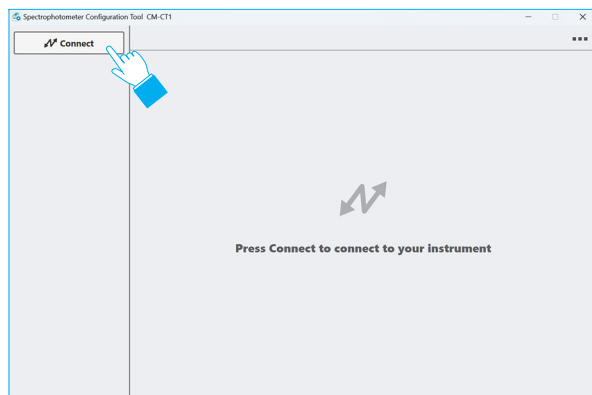
**Memo** Following installation, the initial display language after starting CM-CT1 is English. To change the display language to Japanese, follow the procedure under **Changing the Display Language (P.7)**.

- 2 Connect the spectrophotometer to the computer via USB cable or Bluetooth.

**Memo** WLAN connection cannot be used.

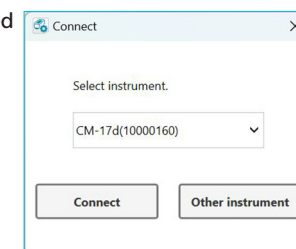
**Memo** USB connection is recommended. Communication via Bluetooth is possible but will be much slower.

- 3 Click the "Connect" button.



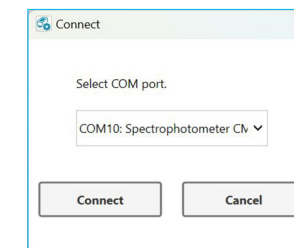
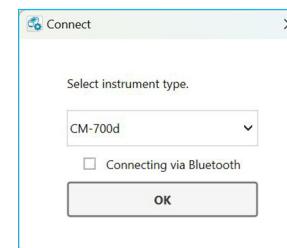
### ■ When using a CM-17d series, CM-26dG series, CM-25cG, or CM-M6 instrument connected via cable

1. The instruments that were automatically detected are displayed in the combo box. Select the instrument from the pulldown list and click the "Connect" button.



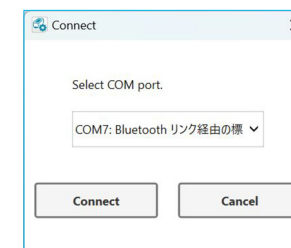
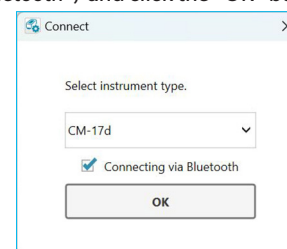
### ■ When using a CM-700d series instrument, CM-5, or CR-5 connected via cable

1. Select the instrument type from the pulldown list and click the "OK" button.
2. Select the COM port from the pulldown list and click the "Connect" button.



### ■ When connecting via Bluetooth

- Be sure that the instrument has been paired with the computer before proceeding.
1. Select the instrument type from the pulldown list, check "Connecting via Bluetooth", and click the "OK" button.
  2. Select the COM port from the pulldown list and click the "Connect" button.



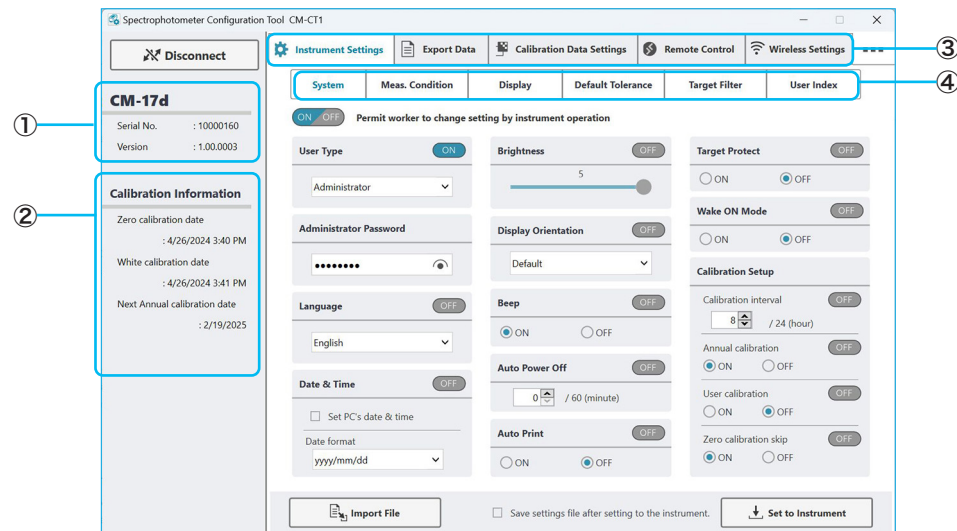
**Memo** If the instrument to be connected is not displayed, check the following.

- The spectrophotometer is switched on.
- The spectrophotometer and the computer are connected correctly.

# Quick Start (Continued)

## 4 Control Panel

If communication with the instrument is established normally, the settings currently configured on the instrument are displayed in CM-CT1.

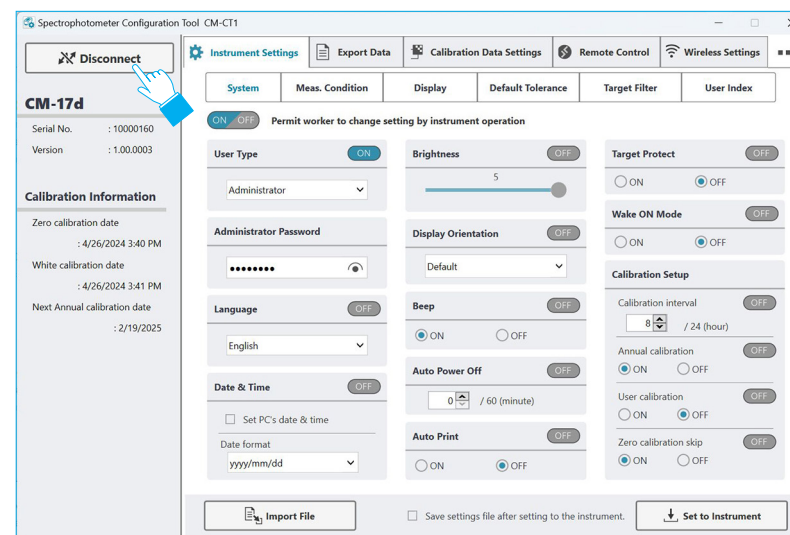


- ① Displays the serial number and the version of the spectrophotometer.
- ② Displays the calibration information of the spectrophotometer.  
If a spectrophotometer is connected to CM-CT1 with no calibration performed after purchasing, only the zero calibration date will be displayed.
- ③ CM-CT1 main function tabs. Available tabs will be different for different instruments.  
The screen will change whenever a new tab is selected. The text of the currently selected tab will be displayed in blue.
- ④ Sub tabs featuring items for the settings found under the currently selected function tab.  
Available sub tabs will be different for different instruments.  
The screen will change whenever a new sub tab is selected. The text of the currently selected sub tab will be displayed in blue.

The screenshot above shows the "Instrument Settings" tab selected with the "System" screen displayed.

**Memo** When CM-CT1 is connected to a spectrophotometer, "Remote" will be displayed on the spectrophotometer, and instrument-based operations will not be possible.

## ◆ Disconnecting and Exiting the Software



Clicking the "Disconnect" button will end communication with the spectrophotometer, and the screen will return to the dialog for connecting to a device.

Clicking "x" in the top right corner will disconnect the spectrophotometer and exit the software.

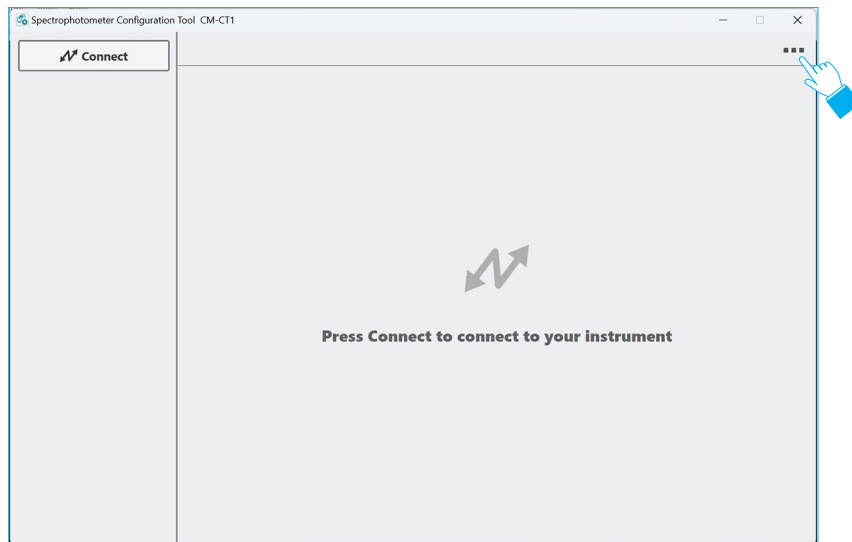
- If "Wake ON Mode" on the instrument is set to ON, the instrument will be automatically switched off when it is disconnected from CM-CT1 or CM-CT1 is exited from.

# Quick Start (Continued)

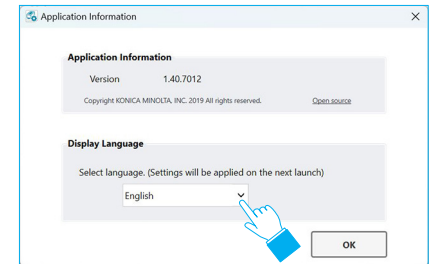
## Changing the Display Language

Following installation, the initial display language after starting CM-CT1 is English. It is possible to change the display language to Japanese.

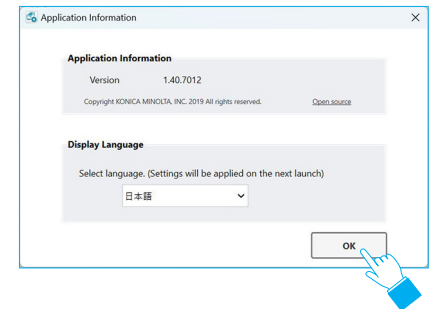
- 1 Click  in the upper-right corner of the screen to display the Application Information dialog.



- 2 Select “日本語” from the pull-down menu.



- 3 Click the “OK” button.



Exit and restart CM-CT1.

Use the same procedure to change the language from Japanese to English.

# Quick Start (Continued)

## Configuring Instrument Settings

### ◆ Procedure

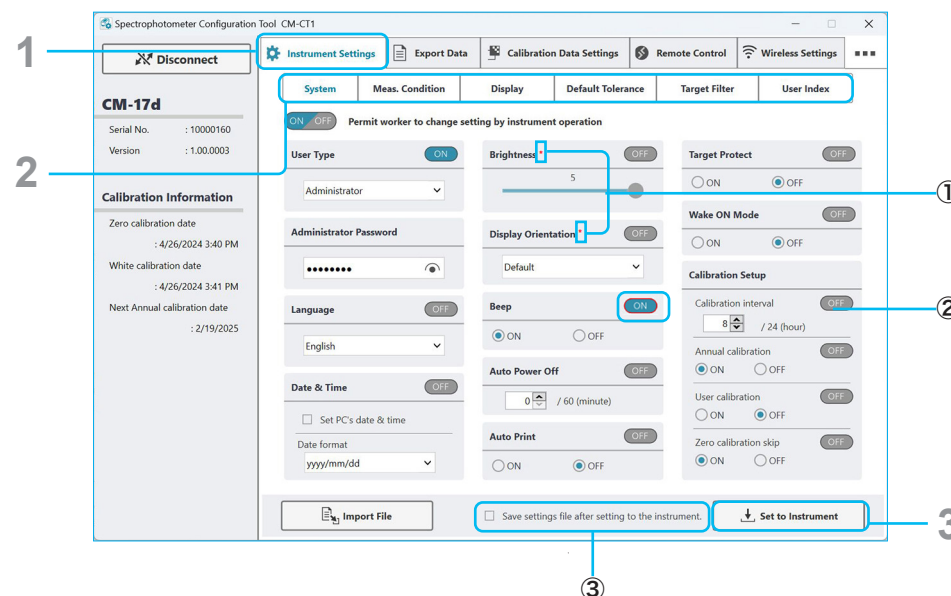
**1** Select the “Instrument Settings” tab.


**2** Select the sub tab for the settings to be changed.

For details on the individual settings, refer to the instruction manual for the spectrophotometer.

**3** Change the settings as desired, and then click the “Set to Instrument” button.

- ① When you change the setting value, a red \* is displayed next to the menu name.
- ② When you change the ON/OFF button, the outer frame of the button turns red.
- ③ To save instrument settings to a file, check “Save settings file after setting to the instrument.”, and click the “Set to Instrument” button.  
The “Save instrument settings file” dialog box will be displayed after the settings are applied to the instrument. Select the save destination, and save the file under any name.



- Memo**
- Enter an 8-digit number under “Administrator Password”. Click  to show the entered values.
  - “Display Orientation” is set to “Default” when shipped.



# Quick Start (Continued)

## ◆ User Index and User Class

- This function is available for CM-17d series, CM-26dG series, CM-25cG, CM-5, or CR-5 instruments only.
- A valid SpectraMagic NX2 license is required.

The User Index tab lets you set the user index and user class to be shown on the Custom screen of the spectrophotometer.

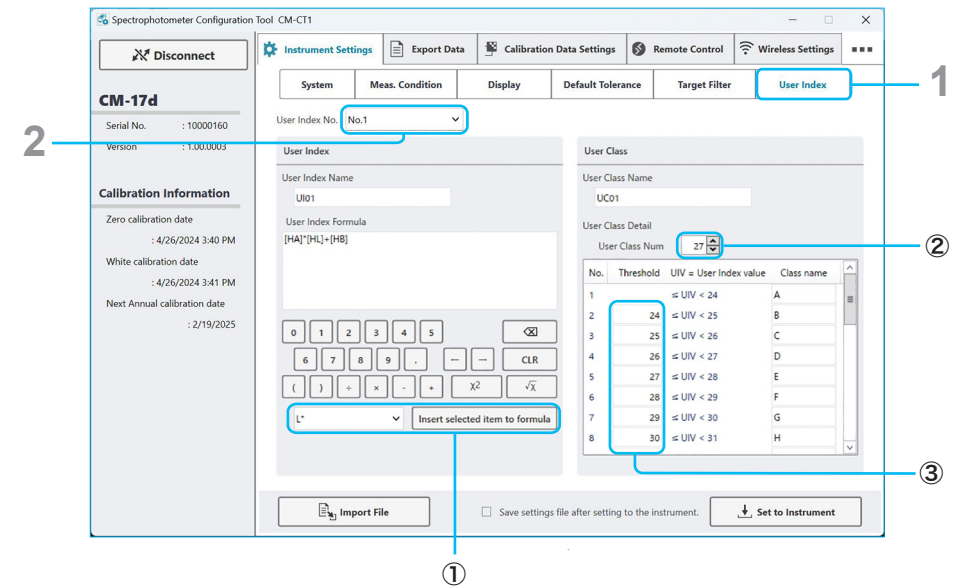
### 1 Select the "User Index" sub tab.

### 2 Select the User Index No. from the pull-down menu.

### 3 Set the user index and user class.

For details on available functions, refer to the appendix of the spectrophotometer's instruction manual.

- ① To add an item (value) to the formula, select the item from the pull-down menu and click the "Insert selected item to formula" button.
- ② Set the number of user classes by inputting the number directly or using the up/down buttons.
- ③ Set the upper threshold for the class. This value will also be used as the lower threshold for the next lower No. class.



# Quick Start (continued)

## ◆ Restricting Worker Operations ( ☒ ON ☐ OFF Display )

- This function is available for CM-17d series, CM-26dG series, CM-25cG, or CM-M6 instruments only.

Click ☒ ON / ☐ OFF to enable or disable worker restrictions. If “Worker” is selected as the “User Type”, whether contents can be changed or not using only the instrument can be configured. If “Worker” is selected as the “User Type”, items marked “OFF” cannot be changed using only the instrument. By default, all settings other than “User Type” in the “System” tab are set to OFF.

Spectrophotometer Configuration Tool CM-CT1

Disconnect

Instrument Settings | Export Data | Calibration Data Settings | Remote Control | Wireless Settings

System | Meas. Condition | Display | Default Tolerance | Target Filter | User Index

☒ ON ☐ OFF Permit worker to change setting by instrument operation

Measurement Mode: ☐ OFF

Color:

Observer/Illuminant

1st Obs: 10° Ill: D65 ☒ ON

2nd Obs: 2° Ill: C ☐ OFF

Measurement Option: ☐ OFF

Auto average: 1 / 10 (Times)

Manual average: 1 / 30 (Times)

Manual average option: ☐ Manual save ☒ Auto save

SMC: ☐ ON ☒ OFF

Threshold: 0.40 / 0.01~9.99

Times: 3 / 3~10 (Times)

Specular Component: ☐ OFF

SCI + SCE:

Auto Target: ☐ OFF

Threshold: 0.50 / 0.01~9.99

Output Minus: ☒ ON ☐ OFF

Import File ☐ Save settings file after setting to the instrument.

Spectrophotometer Configuration Tool CM-CT1

Disconnect

Instrument Settings | Export Data | Calibration Data Settings | Remote Control | Wireless Settings

System | Meas. Condition | Display | Default Tolerance | Target Filter | User Index

☒ ON ☐ OFF Permit worker to change setting by instrument operation

Default Tolerance: ☐ OFF

SCI ☒ SCE

	Obs. & Ill.1	Obs. & Ill.2
$\Delta L^*$	1.00	1.00
$\Delta a^*$	-1.00	-1.00
$\Delta b^*$	1.00	1.00
$\Delta C^*$	-1.00	-1.00
$\Delta H^*$	1.00	1.00
$\Delta L$	1.00	1.00

Warning Level: 80 % ☐ OFF

Parametric Coefficient: ☐ OFF

	SCI	SCE
l(CMC)	1.00	1.00
c(CMC)	1.00	1.00
l(AE*94)	1.00	1.00
c(AE*94)	1.00	1.00
h(AE*94)	1.00	1.00
l(AE*94Sp)	1.00	1.00
c(AE*94Sp)	1.00	1.00
h(AE*94Sp)	1.00	1.00
l(AE00)	1.00	1.00
c(AE00)	1.00	1.00
h(AE00)	1.00	1.00

Import File ☐ Save settings file after setting to the instrument.

Spectrophotometer Configuration Tool CM-CT1

Disconnect

Instrument Settings | Export Data | Calibration Data Settings | Remote Control | Wireless Settings

System | Meas. Condition | Display | Default Tolerance | Target Filter | User Index

☒ ON ☐ OFF Permit worker to change setting by instrument operation

Display Type: ☐ OFF

Absolute value ☒ Difference ☒ Abs. & Diff. ☒ Pass / Fail ☒ Custom ☒ Abs. Graph ☒ Diff. Graph ☒ Spectral Graph

Color Space: ☐ OFF

L\*a\*b\*

Color Equation: ☐ OFF

$\Delta E^*ab$

Custom Items: ☐ OFF

1	My
2	Mc
3	dM
4	$\Delta My$
5	$\Delta Mc$
6	$\Delta dM$
7	$\Delta E^*94(Special)$
8	UE1:ex
9	UE2:
10	UE3:
11	UC1:none
12	UC2:
13	UC3:
14	$\Delta B^*GU$

Import File ☐ Save settings file after setting to the instrument.

Spectrophotometer Configuration Tool CM-CT1

Disconnect

Instrument Settings | Export Data | Calibration Data Settings | Remote Control | Wireless Settings

System | Meas. Condition | Display | Default Tolerance | Target Filter | User Index

☒ ON ☐ OFF Permit worker to change setting by instrument operation

Target Filter: ☐ OFF

Select Group:

Group Name: ☐ OFF

No.	Group Name
1	test-1
2	
3	
4	
5	
6	
7	
8	
9	
10	
11	
12	
13	
14	
15	
16	
17	
18	

Import File ☐ Save settings file after setting to the instrument.

# Quick Start (Continued)

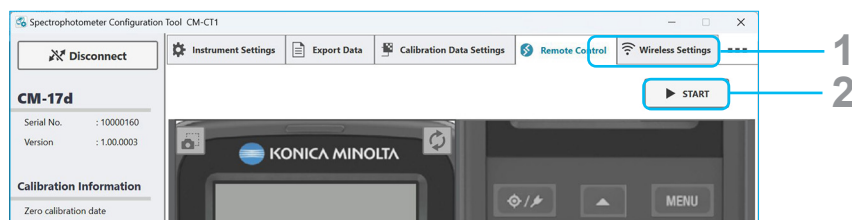
## Remote Control

- This function is available for CM-17d series, CM-26dG series, CM-25cG, or CM-M6 devices only.

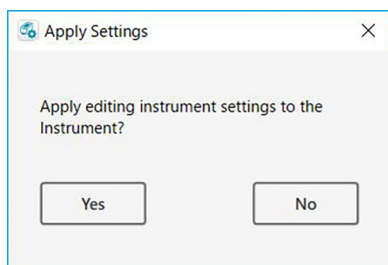
Remote control allows operations equivalent to key operations on the spectrophotometer to be performed while checking the LCD screen on the CM-CT1 software.

### 1 Select the "Remote Control" tab.

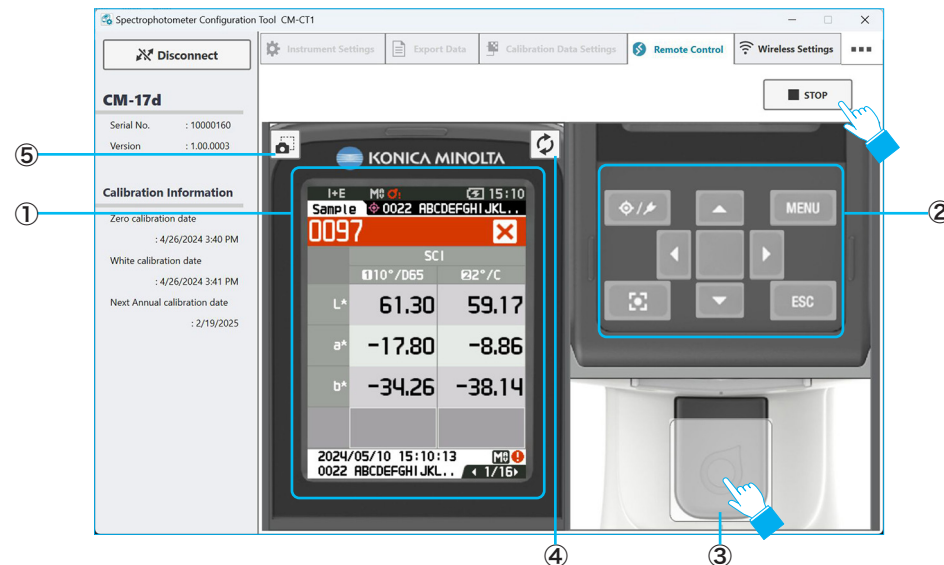
### 2 Click the "START" button.



A dialog requesting verification for applying the settings in the "Instrument Settings" tab to the instrument is displayed.



### 3 Click "Yes" to apply the settings, or click "No" to cancel.



- Displays the LCD screen of the spectrophotometer.  
The screen will display the same content as the LCD screen on the spectrophotometer.
- Equivalent to the keys on the spectrophotometer.  
Clicking the various buttons on the screen will perform the same operation as if the keys were pressed on the spectrophotometer.  
The screen will display the same content as the LCD screen on the spectrophotometer.
- Equivalent to the measurement key on a spectrophotometer.  
Clicking the measurement button on the screen will begin measurement.  
The screen will display the same content as the LCD screen on the spectrophotometer.
- Reflect the LCD screen of the spectrophotometer to area ① of the CM-CT1 software.  
During remote control communication, measurement using the instrument is possible. However, if the spectrophotometer is operated during remote control, the LCD screen of the spectrophotometer will not be reflected on the CM-CT1 software.  
Click this button to refresh the CM-CT1 software display of the spectrophotometer's LCD screen after performing an operation on the spectrophotometer.
- Get a screenshot of area ① in the CM-CT1 software.  
The area ① on the CM-CT1 software lights up once and is copied to the clipboard.

**Memo** For details of LCD contents and key operations, refer to the instruction manual for the spectrophotometer.

### 4 To end remote control, click the "STOP" button.

**Memo** "Remote" will be displayed on the LCD screen of the spectrophotometer, and instrument-based operations will not be possible.

# Quick Start (Continued)

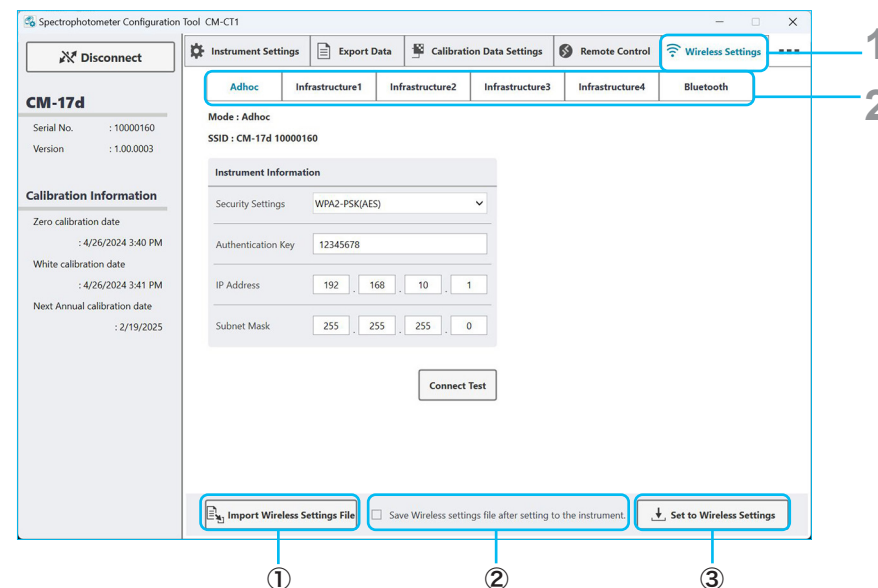
## Wireless Settings

- This function is available only for CM-17d series, CM-26d series, CM-25cG, or CM-M6 instruments that have the optional WLAN/Bluetooth Module installed and instrument firmware which is compatible with the WLAN/Bluetooth Module.
- If both wired and wireless network connections are set in Windows, priority will be given to the wired network during network search.
- If multiple wireless networks are set in Windows, priority will be according to the Windows settings during network search.

### 1 Select the "Wireless Settings" tab.

### 2 Select the sub tab for the wireless setting for which settings will be changed.

- ① To import previously saved wireless settings from a file, click the "Import Wireless Settings File" button.
- ② To save wireless settings to a file after they have been set on the instrument, check "Save Wireless settings file after setting to the instrument".
- ③ To set the dialog wireless settings to the instrument, click the "Set to Wireless Settings" button.



## ■ Adhoc

The Adhoc setting sets up the instrument as an access point which can be connected to directly from the Wi-Fi settings of the computer.

- When Adhoc connection is used, it is not possible to connect to the internet via WLAN from the same wireless adapter on the PC.
- Set the Instrument information in the Adhoc sub tab.

### Instrument Information:

Select the Security Settings from the pulldown list.  
Input the Authentication Key.  
Set the IP Address and Subnet Mask.

Mode : Adhoc  
SSID : CM-17d 10000160

**Instrument Information**

Security Settings: WPA2-PSK(AES)

Authentication Key: 12345678

IP Address: 192 . 168 . 10 . 1

Subnet Mask: 255 . 255 . 255 . 0

Connect Test

### To only write settings to instrument:

- Click the "Set to Wireless Settings" button at the bottom of the dialog.  
The settings will be written to the instrument and the message box "Operation Completed" will appear.

Connect Test

less settings file after setting to the instrument. Set to Wireless Settings

Setting the wireless settings of this tab on the instrument is complete.

### To write dialog settings to instrument and test whether WLAN connection using those settings is possible:

- Click the "Connect Test" button.

A message box will appear.

- Click the "OK" button to start the connection test.

Confirmation

A test connection for the wireless LAN connection will be performed.  
The instrument will disconnect from CM-CT1.

To perform the test connection, click the [OK] button.  
To abort the test connection, click the Cancel button.

OK Cancel

- The settings in the dialog will be written to instrument, and the message box at right will appear.
- If the instrument is connected via USB cable, disconnect the cable.
- On the instrument, set the Wireless Setting to "Adhoc".
- In the computer's Wi-Fi settings, select the SSID of the Adhoc connection, click the "Connect" button, and input the Authentication Key when requested.
- After the Adhoc connection between computer and instrument has been established, click the "OK" button in the message box.
- The Adhoc connection with instrument will be tested, and if successful the message box at right will appear.

Confirmation

Entered configurations written to instrument successfully.

Prepare for the test connection according to the below steps.

1. If the connected instrument is CM-17d/16d, unplug USB cable from instrument and PC.
2. Set Adhoc mode in instrument wireless settings
3. Establish a wireless connection between the PC and instrument from the wireless LAN setting on the PC.
4. Click the OK button when a wireless LAN connection between the PC

OK

Confirmation

Wireless LAN connection with instrument successful.  
To continue using CM-CT1, reconnect via USB connection.

If the connected instrument is CM-17d/16d, set instrument wireless settings to OFF and reconnect via USB connection.

OK

- To continue using CM-CT1, set the instrument's Wireless Setting to "Off", reconnect the instrument and computer via USB cable or Bluetooth, and then reconnect from CM-CT1.

## ■ Infrastructure1 to Infrastructure4

The Infrastructure1 to Infrastructure4 settings set the instrument to enable it to connect to a WLAN access point. The instrument and computer can then be connected via the same access point.

1. Click on the Infrastructure sub tab (Infrastructure1 to Infrastructure4) to set and set the required information in the sub tab.

### Access Point:

Input the access point's SSID.

Select the access point's Security Settings from the pulldown list.

Input the access point's Authentication Key.

### Instrument Information:

Select "Enable" or "Disable" for DHCP.

If DHCP is set to "Enable", the instrument's IP Address and the access point's Subnet Mask and Default Gateway will be set automatically. If DHCP is set to "Disable", input the IP Address to be used for the instrument and the Subnet Mask and Default Gateway of the access point.

### To only write settings to instrument:

2. Click the "Set to Wireless Settings" button at the bottom of the dialog.  
The settings will be written to the instrument and the message box "Operation Completed" will appear.

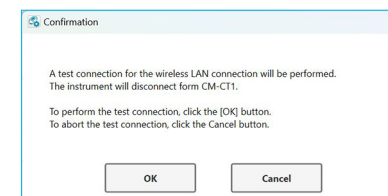
Setting the wireless settings of this tab on the instrument is complete.

## To write dialog settings to instrument and test whether WLAN connection using those settings is possible:

2. Click the "Connect Test" button.

A message box will appear.

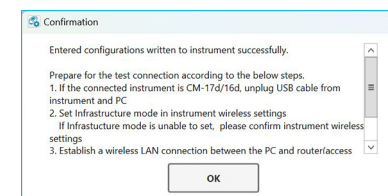
3. Click the "OK" button to start the connection test.



4. The settings in the dialog will be written to instrument, and the next message box will appear.
5. If the instrument is connected via USB cable, disconnect the cable.
6. On the instrument, set the Wireless Setting to the Infrastructure setting which was just set. The instrument will attempt to connect to the access point specified by the SSID.

- If connection is unsuccessful, disable the router's privacy separator, SSID separator, or network separation function, and try again.

7. In the computer's Wi-Fi settings, connect to the access point with the same SSID that was input in step 1.
8. After the connections in steps 6 and 7 have been established, click the "OK" button.



9. Connection between the computer and instrument via the specified access point will be tested, and if successful the message box at right will appear.



- To continue using CM-CT1, set the instrument's Wireless Setting to "Off", reconnect the instrument and computer via USB cable or Bluetooth, and then reconnect from CM-CT1.

## ■ Bluetooth

This tab is used to set the Bluetooth settings for connecting the instrument via Bluetooth to a computer, printer, or scanner.

- Bluetooth settings can also be performed using the instrument controls.

1. Set the information in the Bluetooth sub tab.

### Main

Set the PIN Code for connecting the instrument to a computer.

### Printer

Set the address and printer PIN Code of the printer.

### Scanner

Set the address and PIN code of the scanner.

ID : CM17d\_10000160

**Main**

PIN Code 0000

**Printer**

Address 000000000000

PIN Code 0000

**Scanner**

Address 000000000000

PIN Code 0000

2. After settings have been completed, click the "Set to Wireless Settings" button at the bottom of the dialog.

The settings will be written to the instrument and the message box "Operation Completed" will appear.

Press settings file after setting to the instrument.

Set to Wireless Settings



# Advanced Use

## Setting the Same Measurement Conditions to Multiple Instruments

The CM-CT1 software can be used to export settings configured using the software to a file, which can then be used to set the same measurement conditions to multiple instruments.

- 1 Follow the procedure under the “Configuring Instrument Settings” section (P.8) of “Quick Start” for the first instrument.
- 2 Check “Save settings file after setting to the instrument”, and click the “Set to Instrument” button.
- 3 The “Save instrument settings file” dialog box will be displayed after the settings are applied to the instrument. Select the save destination, and save the file under any name.
- 4 Disconnect from the first instrument.

5 Connect to the second instrument.

6 Click the “Import File” button.

7 The “Select instrument settings file” dialog box will be displayed. Select the file saved in step 3.

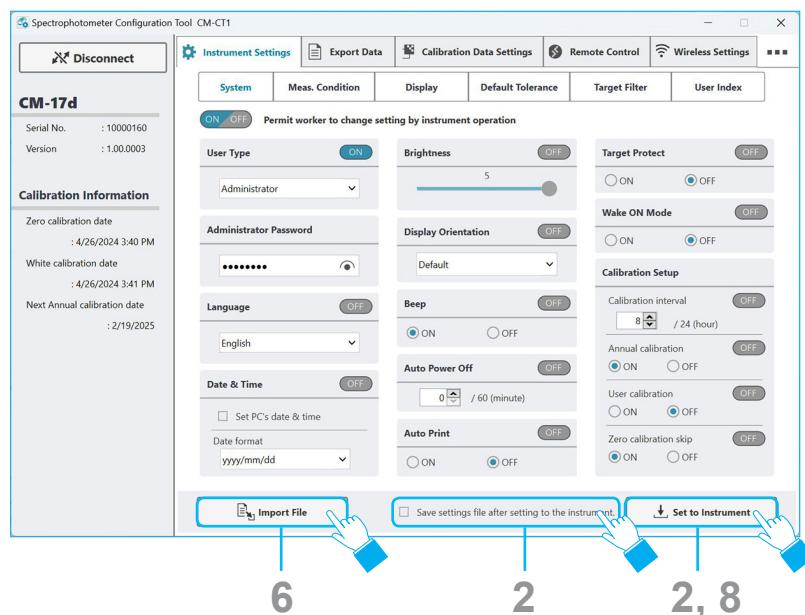
8 Click the “Set to Instrument” button.

9 Disconnect from the second instrument.

To import the same measurement conditions to other instruments, repeat steps 5 through 9.

**Memo** Instruments must be the same type.

This function cannot be used to apply measurement conditions used in one type to instruments of a different type, or vice versa.





# Advanced Use (Continued)

## Remote Control Capabilities

Using a separate computer to connect the computer running the CM-CT1 software over a network enables control of the CM-26dG series, CM-25cG, or CM-M6 equivalent to using key operations on the actual device even from a remote location.



This section describes an example where operations are performed over an in-house network.

**Memo** OS that can be used via Remote Desktop Connection is limited. Visit the Microsoft website for information on supported OS.

Also visit the Microsoft website for detailed information on how to use the remote desktop feature.

### 1 Set the CM-CT1 software to "Remote Control" connection.

### 2 Start Remote Desktop Connection on a separate computer.

The computer with the CM-CT1 software installed must have remote connections enabled beforehand.

### 3 Operate the CM-CT1 software.

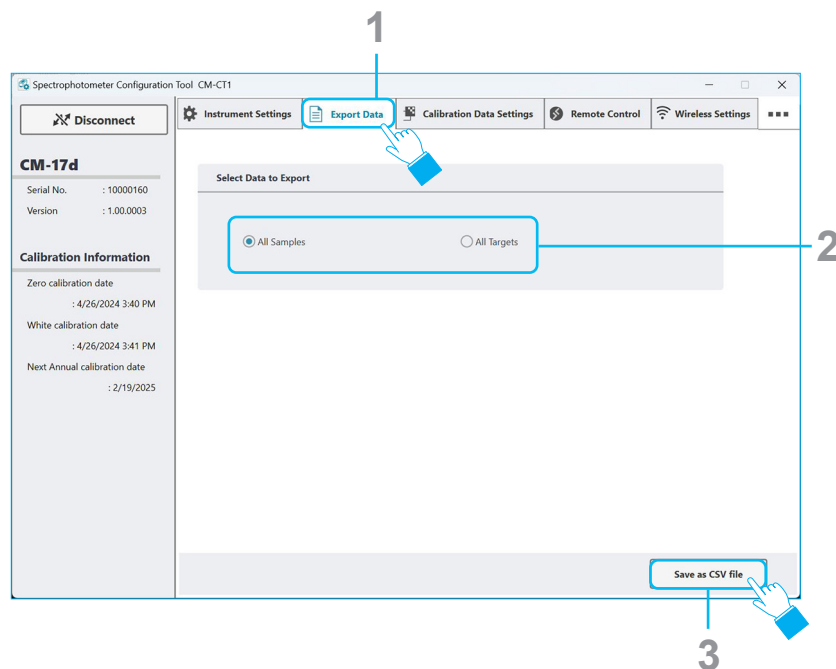
The CM-CT1 software screen on the remote computer will be displayed. To operate the CM-CT1 software, use the mouse as usual. Operations will be performed on the remote device in real time just as if the device operation keys were being used.

# Advanced Use (Continued)

## Export Data Capabilities

Data saved to a spectrophotometer, including measurement spectral reflectance and gloss data (CM-26dG / CM-25cG only), can be saved to a CSV file.

- 1 Select the “Export Data” tab.
- 2 Select either “All Samples” or “All Targets”.
- 3 Click the “Save as CSV file” button.



- 4 The “Export as CSV file” dialog box will be displayed. Select the save destination, and enter a name to save the file.

Format of output data

	A	B	C	D	E	F	G	H	AQ	AR	AS	AT	AU
	Data Name	Measurement Date	Measurement Area	Measurement Mode	UV Condition	Specular Component	Group Name	360[nm]	710[nm]	720[nm]	730[nm]	740[nm]	Gloss
1													
2	Sample0001	2016/3/3 10:00	SAV	Gloss only	UV 100%	SCE	GLOSS	---	---	---	---	---	0
3	Sample0002	2016/3/3 10:00	SAV	Color & Gloss	UV 0%	SCE	SCE	2	2	2	2	2	0
4	Sample0003	2016/3/3 10:00	MAV	Color only	UV 0%	SCI + SCE	SCI	2.44	2.44	2.44	2.44	2.44	---
5	Sample0003	2016/3/3 10:00	MAV	Color only	UV 0%	SCI + SCE	SCE	8.92	18.92	18.92	18.92	18.92	---
6	Sample0004	2016/3/3 10:00	SAV	Color & Gloss	UV 100%	SCI	SCI	8.92	18.92	18.92	18.92	18.92	50.03
7	Sample0005	2016/3/3 10:00	MAV	Color only	UV 0%	SCE	SCE	6.85	66.85	66.85	66.85	66.85	---
8	Sample0006	2016/3/3 10:00	MAV	Opacity	UV 100%	SCE	WHITE	2.95	2.95	2.95	2.95	2.95	---
9	Sample0006	2016/3/3 10:00	MAV	Opacity	UV 100%	SCE	BLACK	64	71.64	71.64	71.64	71.64	---
10	Sample0007	2016/3/3 10:00	MAV	Gloss only	UV 100%	SCI	GLOSS	---	---	---	---	---	50.06

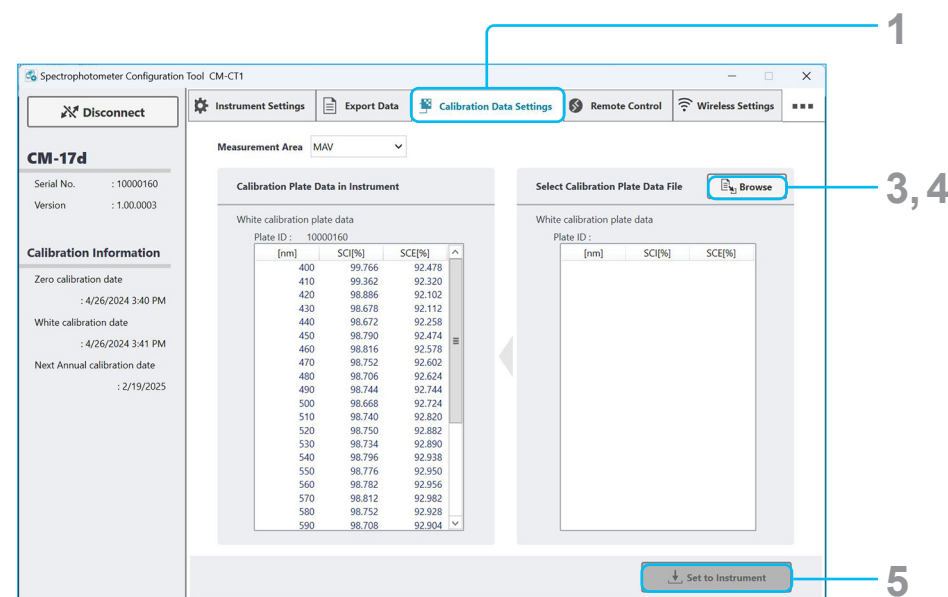
**Memo** To export L\*a\*b\* values or other color values to the computer, purchase the optional SpectraMagic NX software (available for Konica Minolta spectrophotometers).

# After Purchasing a New White Calibration Plate or Gloss Calibration Plate

Be sure to perform this procedure before measuring after purchasing a new white calibration plate or gloss calibration plate.

- 1 Select the “Calibration Data Settings” tab.
- 2 Insert the CD-R with the new calibration plate data into the computer.
- 3 Click the “Browse” button to display the “Calibration plate data file” dialog, and select the cwm file (white calibration plate data file) from the CD-R inserted in step 2.
- 4 Click the “Browse” button again, and select the gum file (gloss calibration plate data file) from the CD-R inserted in step 2 (CM-26dG / CM-25cG only).
- 5 Click the “Set to Instrument” button.

**Memo** After the settings have been applied to the instrument, the contents of the “Calibration Plate Data in Instrument” displayed on the left are updated to the newest data.



# Errors and Corrective Actions

Error No.	Error		Check Point		Action	
1	Failed to get instrument settings.	Please reconnect to the instrument.	A) Is the instrument turned OFF? B) USB communication: Is the USB cable connected properly? C) USB communication: Is the USB cable broken? D) Bluetooth communication: Has the Bluetooth connection been lost? E) Is another application connected to the CM-26dG series device?	▶	A) Turn ON the instrument. B) Connect the instrument to the computer correctly. C) Replace the USB cable. D) Connect via Bluetooth. E) Disconnect any other application communicating with the instrument.	Start the CM-CT1 software and reconnect.
2	Failed to apply instrument settings.					
3	Failed to get the data.					
4	Failed to remote control.					
5	Failed to connect to instrument.					
6	Failed to export data.					
7	Failed to write the calibration plate data.					
8	Failed to read calibration plate file. Please check that cwm file and cws file, or the gum file and gus file are in the same folder.	▶	Are the cwm file and cws file in the same folder? Are the gum file and gus file in the same folder?	▶	To change white calibration plate data, place the cwm file and cws file in the same folder. To change gloss calibration plate data, place the gum file and gus file in the same folder.	
9	Failed to read calibration plate file. Please check that cwm file and cws file are in the same folder.	▶	Are the cwm file and cws file in the same folder?	▶	Place the cwm file and cws file in the same folder.	
10	Failed to read calibration plate data file. File format has error.	▶	—	▶	The calibration data file may be corrupted. Take note of the calibration plate serial number, and contact the nearest KONICA MINOLTA indicated on the Authorized Service Facility list included with the instrument.	
11	The selected file is incorrect. Please select the file dedicated to your instrument.	▶	Is the selected calibration data correct for the calibration plate?	▶	Verify that the serial number included in the selected file name matches the serial number on the applicable calibration plate.	
12	Failed to read settings file. This file is broken. File format has error.	▶	Was the setting file created with a newer application? Have the settings in the setting file changed?	▶	Use the newer application. File format may be corrupted. Export a new setting file.	
13	No data in the instrument.	▶	Is there data saved on the instrument?	▶	Verify that data has been saved on the instrument	
14	Failed to save a file. Please check the storage location.	▶	Has the save destination been removed? Is a file with the same name already open?	▶	Select an existing folder. Close the file with the same name, and try saving the file again.	
15	Some items loaded from the instrument are not supported on the current version of the software. The following items are set to the initial value. <ul style="list-style-type: none"> <li>Item a (a: unsupported item)</li> </ul>	▶	Is the CM-CT1 software the latest version?	▶	Download the latest edition from the KONICA MINOLTA website ( <a href="https://www.konicaminolta.com/instruments/download/software/color/cmct/index.html">https://www.konicaminolta.com/instruments/download/software/color/cmct/index.html</a> ).	

Error No.	Error	Check Point	Action
16	<p>This instrument version does not support the following functions. Update the firmware to set the instrument.</p> <p>Unset items</p> <ul style="list-style-type: none"> <li>•XXXX YYYY</li> </ul>	—	<p>If you wish to update the firmware, and contact the nearest KONICA MINOLTA indicated on the Authorized Service Facility list included with the instrument.</p>
17	<p>Unable to set "UV Control" in the UV Condition setting of the CM-26dG/26d because fluorescence coefficients are not registered in this instrument.</p> <p>To specify "UV Control", register fluorescence coefficients in the instrument.</p>	Are the fluorescence coefficients set on the instrument?	<p>Use Color Management Software SpectraMagic NX2 (Ver. 1.2 or later) to set the fluorescence coefficients to CM-26dG series.</p>



KONICA MINOLTA